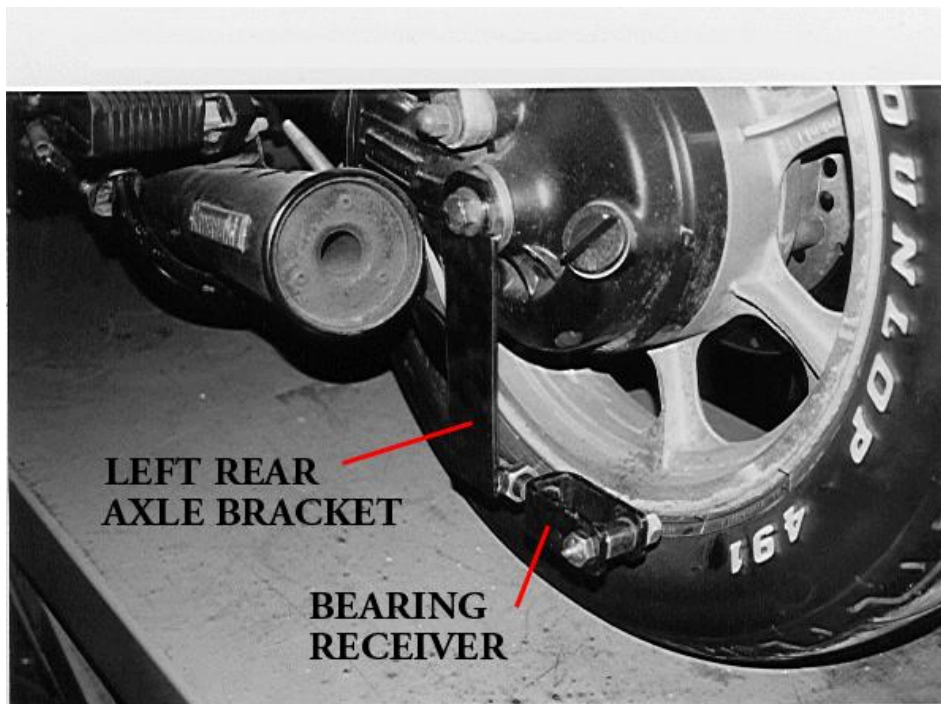
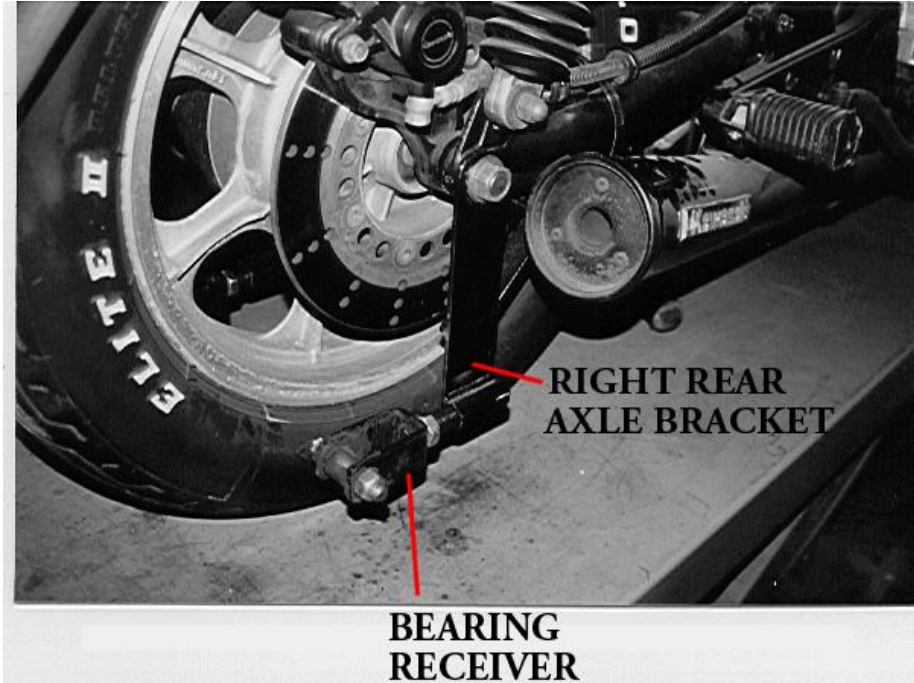
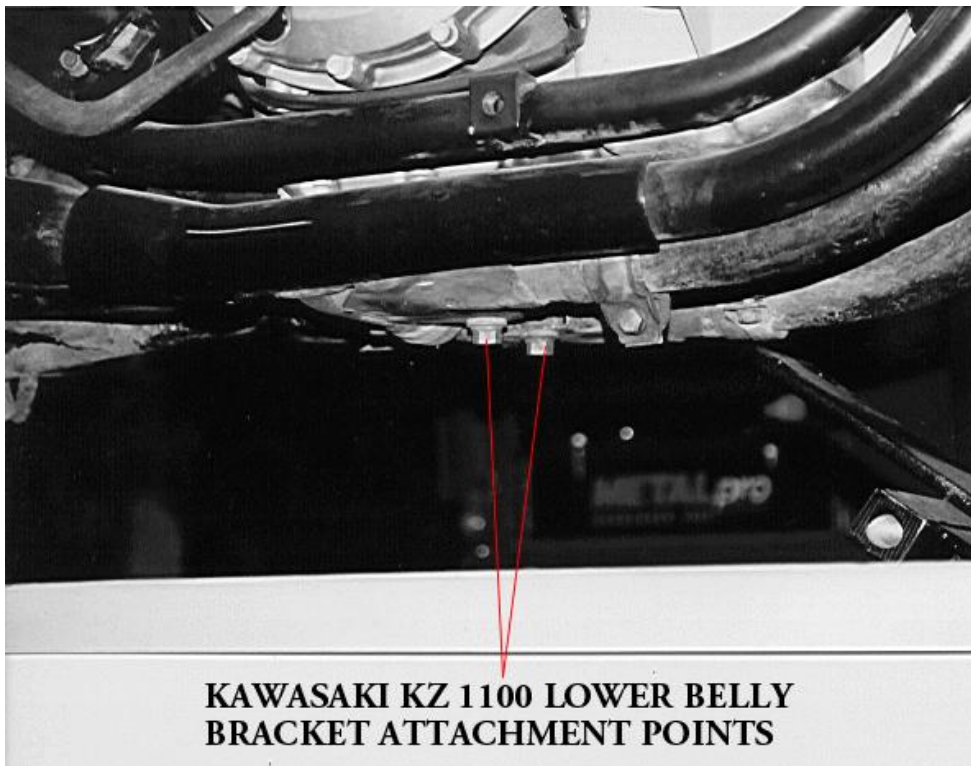
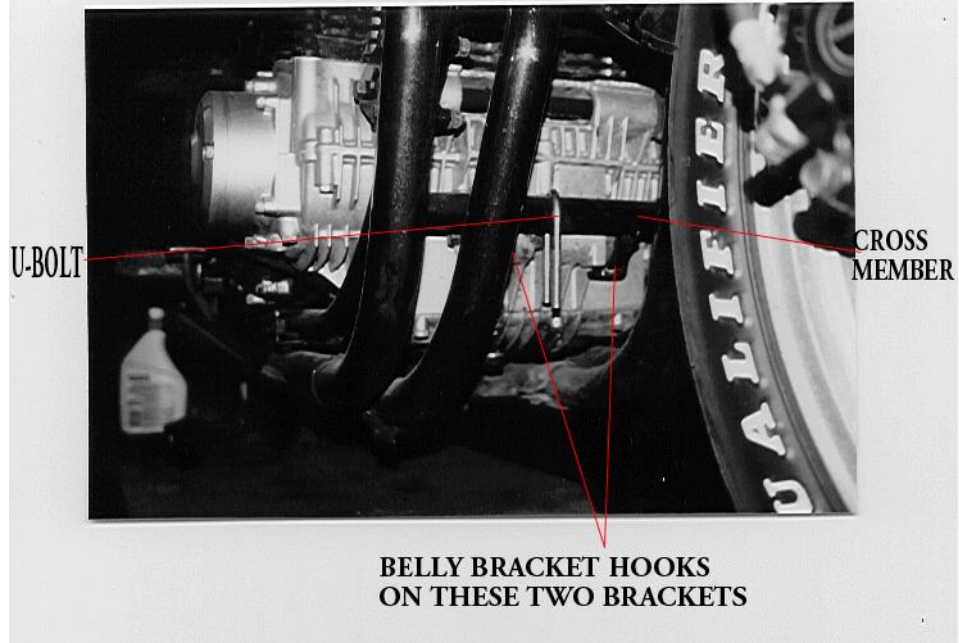


KAWASAKI KZ 1100  
REAR AXLE BRACKETS INSTALLED



# KAWASAKI KZ 1100 BELLY BRACKET ATTACHMENT POINTS

KAWASAKI KZ 1100 FORWARD ATTACHMENT POINTS



# KAWASAKI KZ 1100 BELLY BRACKET INSTALLED

KAWASAKI KZ 1100 BELLY BRACKET INSTALLED (FRONT VIEW)

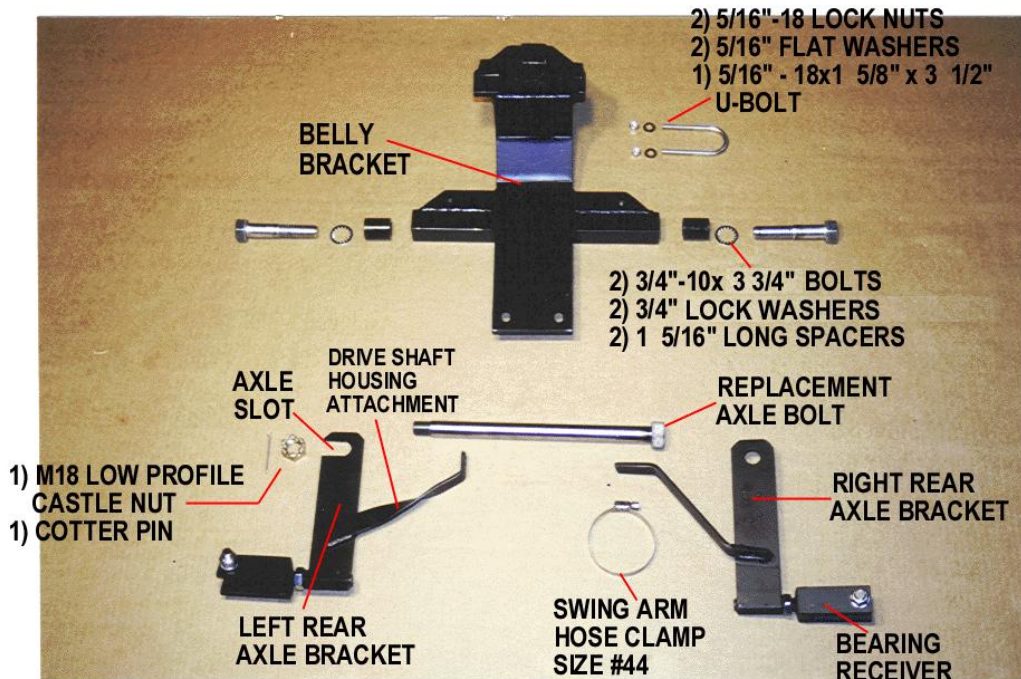


KAWASAKI KZ 1100 BELLY BRACKET INSTALLED (LEFT SIDE)



# KAWASAKI KZ 1100

## DESCRIPTION OF PARTS



One 3/8" washer used as a shim— not shown in picture above.  
You may or may not have to use the shim. See note below.

After installing the mounting hardware and attaching the Voyager frame to the belly bracket you may need a shim to make the motorcycle stand straight up and down. The shim may be used on either the left or the right side depending on which way the motorcycle is leaning. If the motorcycle is leaning to the left put the shim on the left side. If the motorcycle is leaning to the right put the shim on the right side.

**Place shim in-between the belly bracket and motorcycle front cross member.**



# SECTION 1

## INSTALLATION OF KAWASAKI KZ 1100 MOUNTING HARDWARE

Place motorcycle on a clean flat surface. Tie down motorcycle so it does not tip over during installation of hardware. Installation is easier if motorcycle is in an upright position.

**Disconnect negative cable from battery before beginning installation.**

**NOTE:** The Voyager Convertible Kit was designed for a stock motorcycle from the manufacturer. Any after market products that are on a stock motorcycle may cause the installation process to not be done properly and may or may not need to be removed to be able to install the Voyager Convertible Kit completely. Be aware that your motorcycle and the same make & model as someone else's motorcycle may not have mufflers, body panels, frames, fenders and any other manufacturer parts that are attached to the motorcycle in the exact same place as yours. We at Motorcycle Tour Conversion, Inc. take that into consideration when we manufacture our parts to fit your motorcycle. Once in awhile you may need to modify your motorcycle slightly so that the Motorcycle Tour Conversion, Inc. hardware or suspension fits your motorcycle. Please call Motorcycle Tour Conversion, Inc. if you have any questions about installation with after market products or any modification of motorcycle and/or Motorcycle Tour Conversion, Inc. hardware.

### A) BELLY BRACKET

- 1) Locate and remove the two bolts that hold the exhaust to the bottom of the engine. Attach rear of belly bracket and reinstall bolts.
- 2) Hook the "U" bolt (provided with this kit) over the lower frame cross bar. (make sure that the front tabs of the belly bracket hook over the tabs under the cross member.
- 3) Attach the belly bracket and torque the rear bolts to 20 ft. lbs. Torque the "U" bolt to 15 ft. lbs.

### B) REAR AXLE BRACKETS

- 1) Support the rear of the motorcycle and remove the rear axle.
- 2) Remove the lower/outer drive shaft housing nut.
- 3) Replace the axle with the new longer axle (provided with this kit)
- 4) Attach the left rear axle bracket to the drive shaft housing stud and the axle.

# **SECTION 1**

## **INSTALLATION OF KAWASAKI KZ 1100**

### **MOUNTING HARDWARE**

- 5) Place the right rear axle bracket over the axle and clamp the swing arm attachment to the bottom of the swing arm of the motorcycle using the hose clamp provided with this kit.
- 6) Now tighten in order, 1) the drive shaft housing nut to 20 ft. lbs. then 2) the axle nut to 70 ft. lbs.



MOTORCYCLE TOUR CONVERSION, INC.  
1530 TITANIUM DR  
OTTAWA, IL. 61350

TOLL FREE: 877-434-7901  
FAX: 815-434-8980

## **KAWASAKI KZ 1100**

INSTALLATION MANUAL  
US PATENT # 6,739,420

**WARRANTY WILL BE VOID IF INSTALLATION  
IS NOT DONE PROPERLY**

**READ THIS MANUAL FULLY BEFORE  
BEGINNING INSTALLATION OR DRIVING YOUR  
MOTORCYCLE WITH THE VOYAGER KIT ATTACHED**