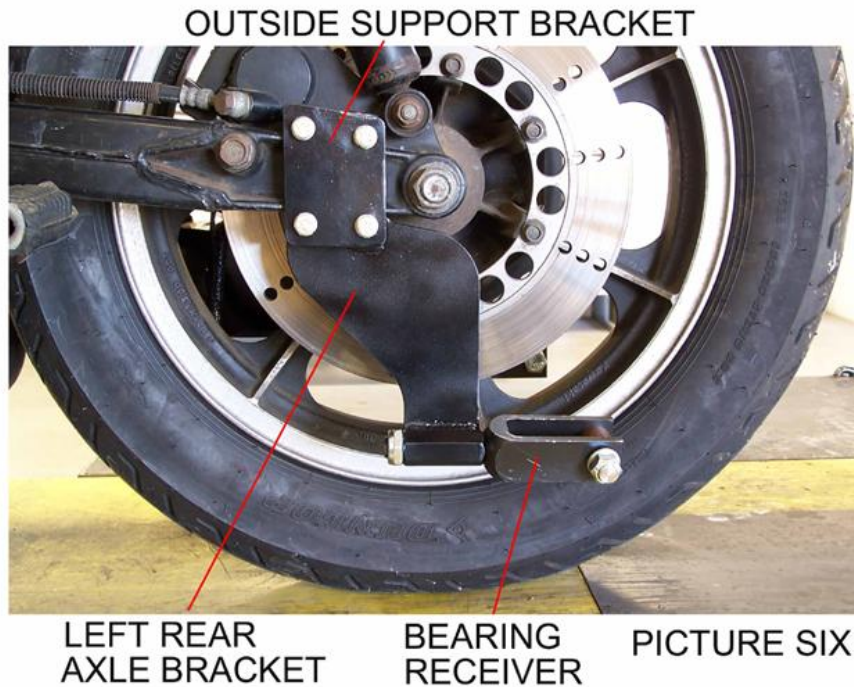
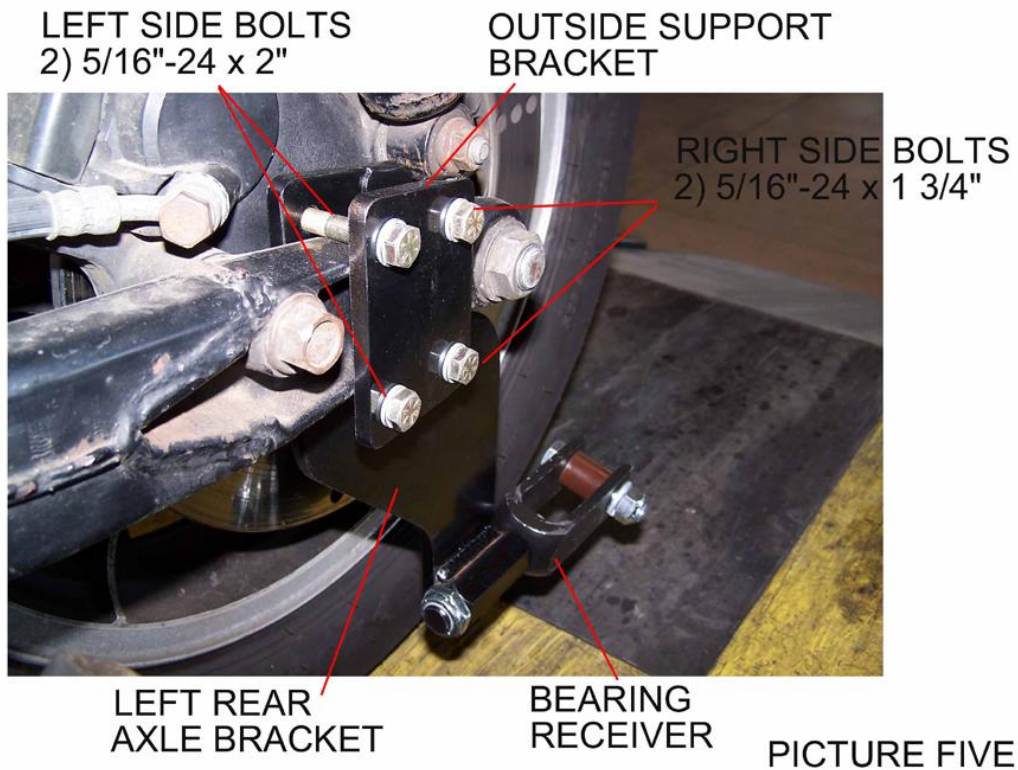


KAWASAKI KZ 1300

LEFT REAR AXLE BRACKET INSTALLED



KAWASAKI KZ 1300

RIGHT REAR AXLE BRACKET INSTALLED

INSIDE CLAMP
OF RIGHT REAR
AXLE BRACKET



RIGHT REAR
AXLE BRACKET

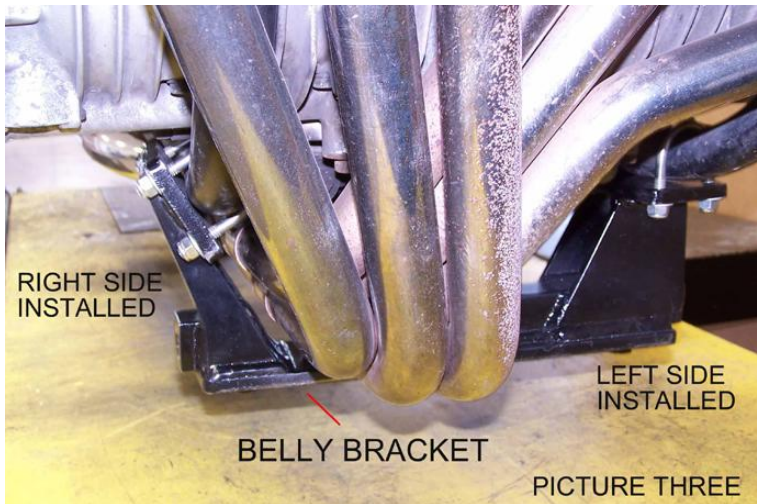
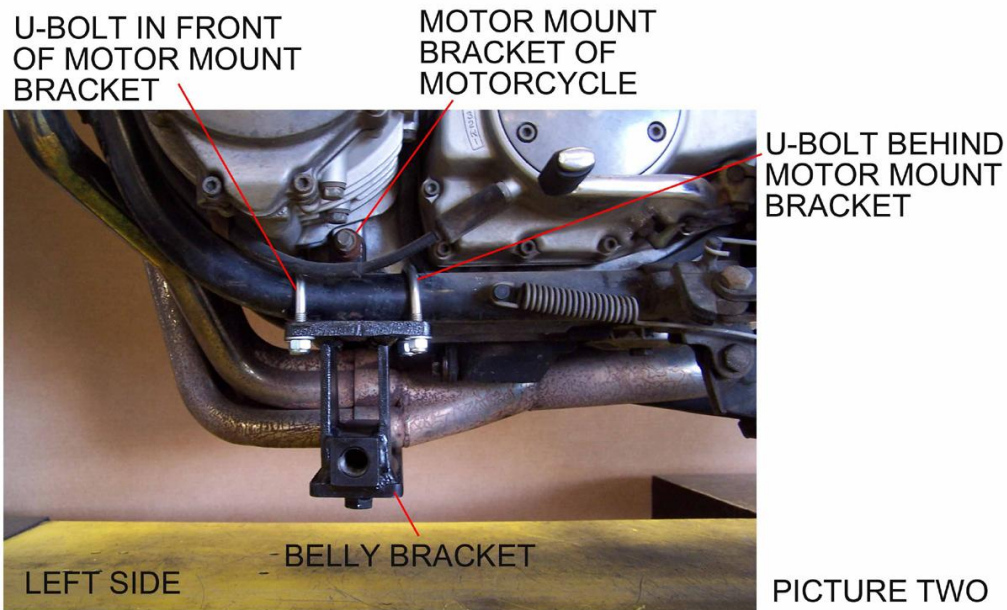
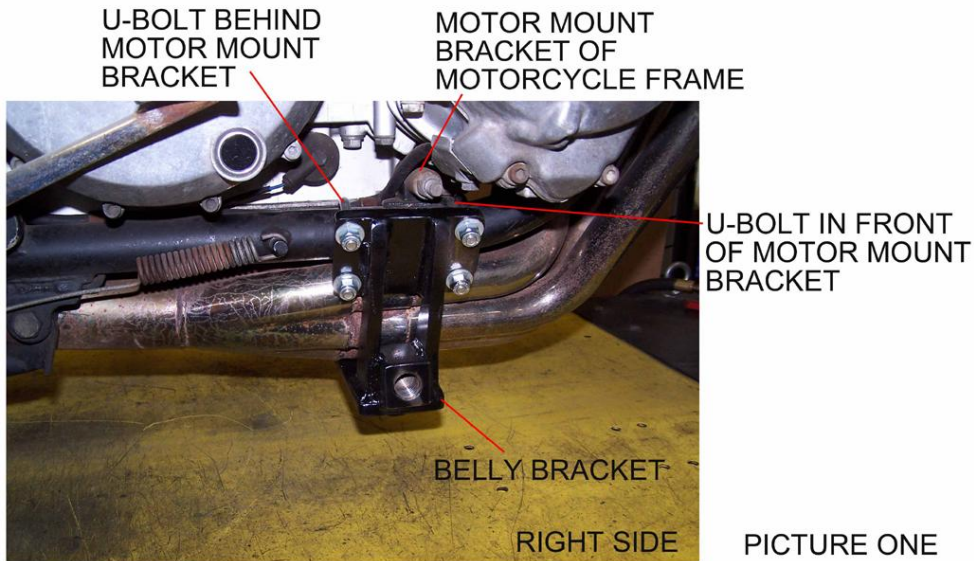
DRIVE SHAFT
HOUSING
ATTACHMENT OF
RIGHT REAR
AXLE BRACKET

BEARING
RECEIVER

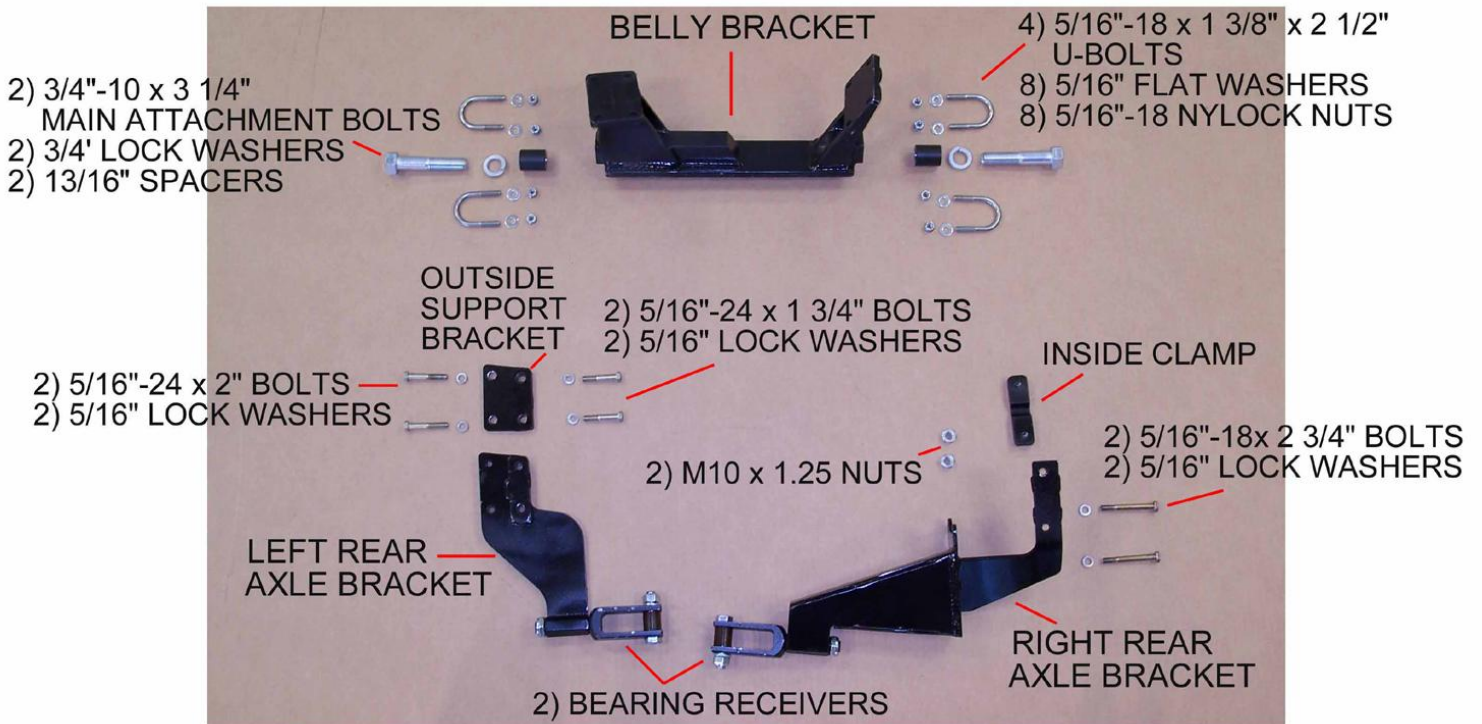
PICTURE FOUR

KAWASAKI KZ 1300

BELLY BRACKET INSTALLED



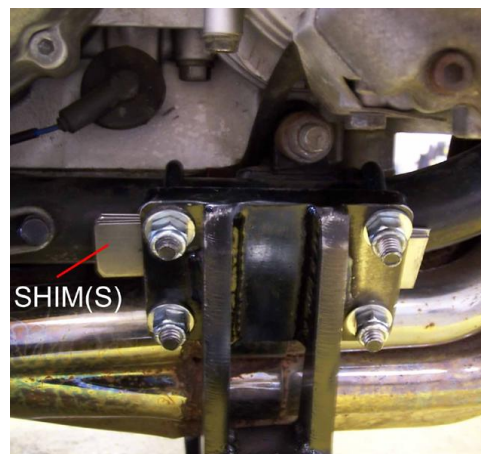
KAWASAKI KZ 1300 DESCRIPTION OF PARTS



Four 5" shim(s) – not shown in picture above.
You may or may not have to use the shim(s).

After installing the mounting hardware and attaching the Voyager frame to the belly bracket you may need a shim(s) to make the motorcycle stand straight up and down. The shim(s) is used on the right side.

Install the shim(s) in-between belly bracket and motorcycle frame.



SECTION 1

INSTALLATION OF KAWASAKI KZ 1300 MOUNTING HARDWARE

Place motorcycle on clean flat surface. Make sure to tie down motorcycle on both sides, so that motorcycle cannot tip over while installing hardware. Installation is easier if motorcycle is in an upright position.

Disconnect negative cable from battery before beginning installation.

NOTE: The Voyager Convertible Kit was designed for a stock motorcycle from the manufacturer. Any after market products that are on a stock motorcycle may cause the installation process to not be done properly and may or may not need to be removed to be able to install the Voyager Convertible Kit completely. Be aware that your motorcycle and the same make & model as someone else's motorcycle may not have mufflers, body panels, frames, fenders and any other manufacturer parts that are attached to the motorcycle in the exact same place as yours. We at Motorcycle Tour Conversion, Inc. take that into consideration when we manufacture our parts to fit your motorcycle. Once in awhile you may need to modify your motorcycle slightly so that the Motorcycle Tour Conversion, Inc. hardware or suspension fits your motorcycle. Please call Motorcycle Tour Conversion, Inc. if you have any questions about installation with after market products or any modification of motorcycle and/or Motorcycle Tour Conversion, Inc. hardware.

A) BELLY BRACKET

- 1) On right side of motorcycle frame install 1) U-bolt 5/16"-18 x 1 3/8" x 2 1/2" over frame and in front of motor mount bracket that is welded to frame of motorcycle.
- 2) Install 1) U-bolt 5/16"-18 x 1 3/8" x 2 1/2" over frame and behind motor mount bracket welded to frame of motorcycle.
- 3) Install right side of belly bracket to u-bolts with 4) 5/16" flat washers and 4) 5/16"-18 nylock nuts. **Do Not Tighten At This Time.**
- 4) On left side of motorcycle frame install 1) U-bolt 5/16"-18 x 1 3/8" x 2 3/16" over frame and in front of motor mount bracket that is welded to frame of motorcycle.
- 5) Install 1) U-bolt 5/16"-18 x 1 3/8" x 2 3/16" over frame and behind motor mount bracket welded to frame of motorcycle.
- 6) Lift left side of belly bracket up to u-bolts and attach with 4) 5/16" flat washers and 4) 5/16"-18 nylock nuts. **Snug all 8) 5/16"-19 nylock nuts at this time.**

Note: Installation of belly bracket can be seen in pictures One, Two, & Three.

SECTION 1 INSTALLATION OF KAWASAKI KZ 1300 MOUNTING HARDWARE

B) REAR AXLE BRACKETS

RIGHT REAR AXLE BRACKET

- 1) Remove the lower two nuts from the drive shaft housing where it attaches to the rear end.
- 2) Place the right rear axle bracket onto the drive shaft studs and attach with 2) M10 x 1.25 nuts supplied with kit. Make sure right rear axle bracket is on outside of drive shaft housing.
- 3) Install inside clamp of right rear axle bracket on inside of drive shaft housing. Attach right rear axle bracket to inside clamp with 2) 5/16" lock washers and 2) 5/16"-19 x 2 3/4" bolts.

Note: Installation can be seen in picture Four.

LEFT REAR AXLE BRACKET

- 1) Install the left rear axle bracket on inside of swing arm of motorcycle just in front of lower shock mount of motorcycle.
- 2) Install outside support bracket to the left rear axle bracket with 2) 5/16" lock washers and 2) 5/16-24 x 1 3/4" bolts on right side of brackets.
- 3) Install 2) 5/16" lock washers and 2) 5/16-24 x 2" bolts on left side of brackets.

Note: Installation can be seen in picture Five and Six.



**MOTORCYCLE TOUR CONVERSION, INC.
1530 TITANIUM DR
OTTAWA, IL. 61350**

**TOLL FREE: 877-434-7901
FAX: 815-434-8980**

**KAWASAKI KZ 1300
(6 pipes into 1)**

**INSTALLATION MANUAL
US PATENT # 6,739,420**

**WARRANTY WILL BE VOID IF INSTALLATION
IS NOT DONE PROPERLY**

**READ THIS MANUAL FULLY BEFORE
BEGINNING INSTALLATION OR DRIVING YOUR
MOTORCYCLE WITH THE VOYAGER KIT ATTACHED**

