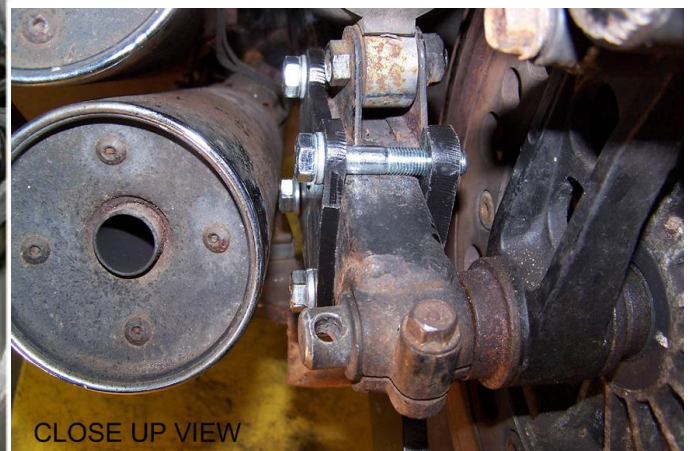
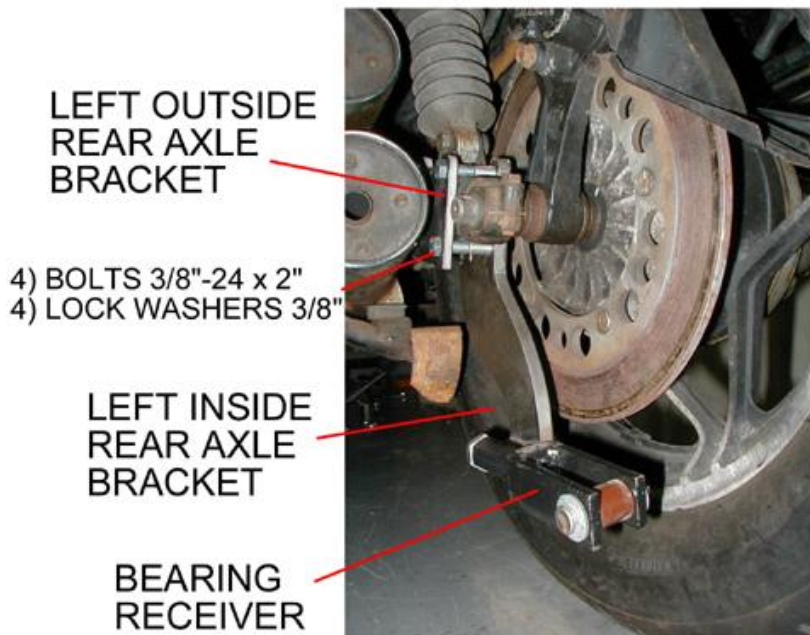
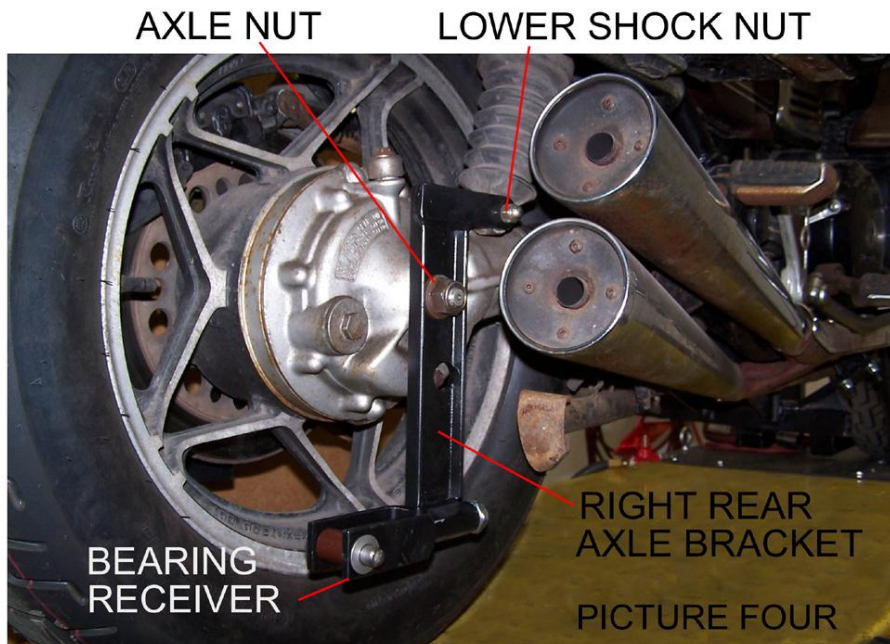
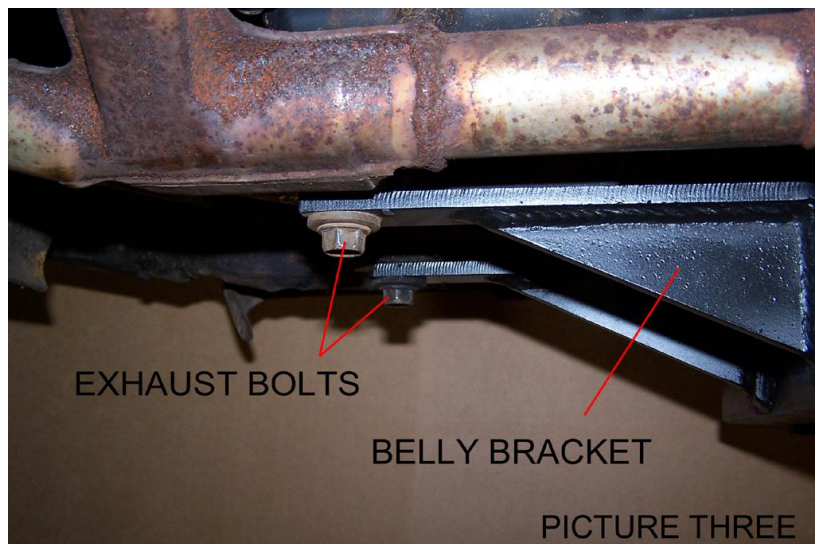
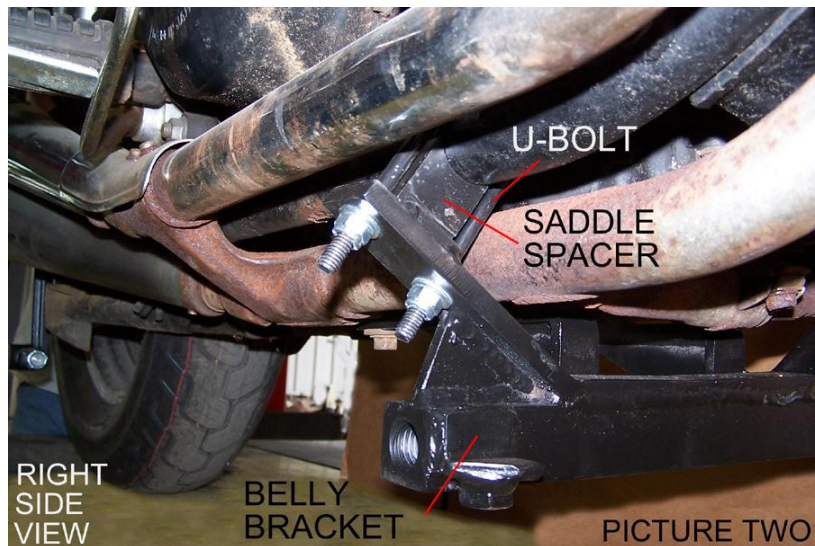
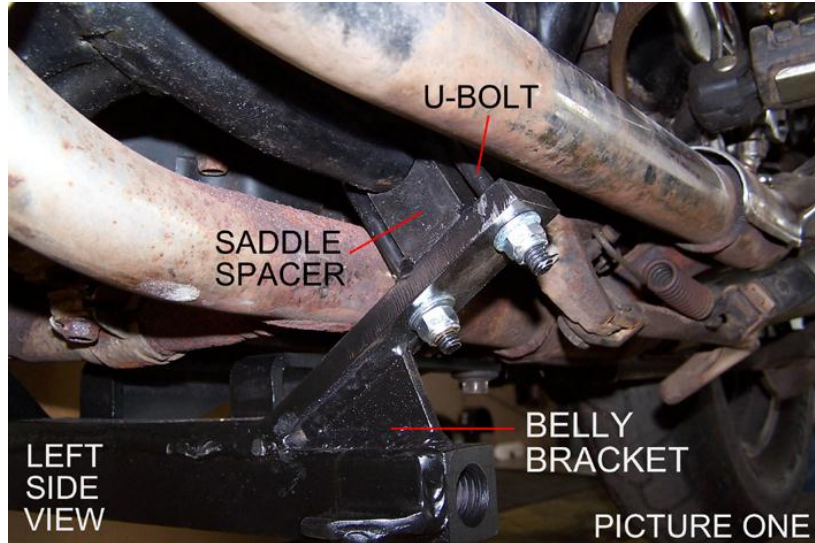


# HONDA CB 1000 CUSTOM (1983) & HONDA CB 900 CUSTOM (1982) REAR AXLE BRACKETS INSTALLED

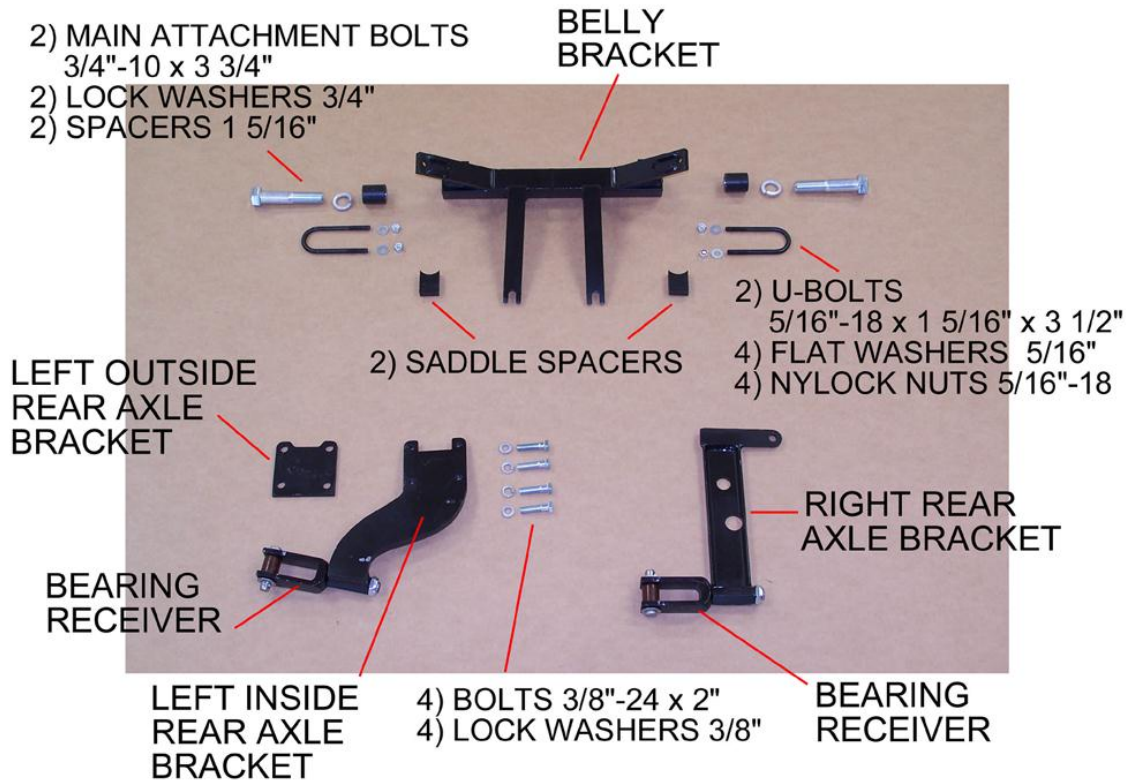


PICTURE FIVE

**HONDA CB 1000 CUSTOM (1983) &  
HONDA CB 900 CUSTOM (1982)  
BELLY BRACKET INSTALLED  
(PICTURES 1, 2 & 3)**



## HONDA CB 1000 CUSTOM (1983) & HONDA CB 900 CUSTOM (1982) DESCRIPTION OF PARTS



One 1" shim– not shown in picture above.

You may or may not have to use the shim. See note below.

After installing the mounting hardware and attaching the Voyager frame to the belly bracket you may need a shim to make the motorcycle stand straight up and down.

The shim may be used on either the left or the right side depending on which way the motorcycle is leaning. If the motorcycle is leaning to the left put the shim on the left side. If the motorcycle is leaning to the right put the shim on the right side. The shim will go on one side of the belly bracket.

**Place shim in-between belly bracket & saddle spacer.**

# SECTION 1

## INSTALLATION OF

### HONDA CB 1000 CUSTOM (1983) & HONDA CB 900 CUSTOM (1982)

### MOUNTING HARDWARE

Place motorcycle on a clean flat surface. Be sure to tie down motorcycle so it does not tip over during installation. Installation is easier if motorcycle is in an upright position.

**Disconnect negative cable from battery before beginning installation.**

**NOTE:** The Voyager Convertible Kit was designed for a stock motorcycle from the manufacturer. Any after market products that are on a stock motorcycle may cause the installation process to not be done properly and may or may not need to be removed to be able to install the Voyager Convertible Kit completely. Be aware that your motorcycle and the same make & model as someone else's motorcycle may not have mufflers, body panels, frames, fenders and any other manufacturer parts that are attached to the motorcycle in the exact same place as yours. We at Motorcycle Tour Conversion, Inc. take that into consideration when we manufacture our parts to fit your motorcycle. Once in awhile you may need to modify your motorcycle slightly so that the Motorcycle Tour Conversion, Inc. hardware or suspension fits your motorcycle. Please call Motorcycle Tour Conversion, Inc. if you have any questions about installation with after market products or any modification of motorcycle and/or Motorcycle Tour Conversion, Inc. hardware.

#### A) BELLY BRACKET

- 1) Place 2) 5/16" – 18 x 1 5/16" x 3 1/2" u-bolts, one on each side of the motorcycle frame, just behind the motor mount bracket on frame.
- 2) Loosen the 2 exhaust bolts on the bottom of the engine.
- 3) Install the front of the belly bracket to the u-bolts with the 4) 5/16" flat washers and 4) 5/16"–18 nylock nuts. Then install the 2) saddle spacers, one on each side, in between the belly bracket and the motorcycle frame.
- 4) Install rear of the belly bracket in between the exhaust bolts and the exhaust. Now snug the belly bracket bolts and nuts.  
(Note: Instructions 1 thru 4 can be seen in pictures one, two, and three.)

# SECTION 1

## INSTALLATION OF HONDA CB 1000 CUSTOM (1983) & HONDA CB 900 CUSTOM (1982) MOUNTING HARDWARE

### B) REAR AXLE BRACKETS

#### RIGHT REAR AXLE BRACKET

- 1) Remove right side lower shock nut and washer, then remove axle nut.
- 2) Install the right rear axle bracket over shock stud and axle bolt.
- 3) Replace the shock nut and axle nut and tighten.  
(Note: Shown in picture four.)

#### LEFT REAR AXLE BRACKET

- 1) Place left outside rear axle bracket on the swing arm and make sure you install the 2) 3/8" lock washers and 2) 3/8"-24 x 2" bolts in the bottom holes of the bracket.
- 2) Once placed on the swing arm install the 2) 3/8" lock washers and the 2) 3/8"-24 x 2" bolts in the top holes of the left outside rear axle bracket. Make sure that the top ears of the bracket are centered between the lower shock mount.
- 3) Place left inside rear bracket on the inside of the swing arm. Install the inside and outside brackets together with bolts and tighten.  
(Note: Shown in picture five.)



MOTORCYCLE TOUR CONVERSION, INC.  
1530 TITANIUM DRIVE  
OTTAWA, IL 61350

TOLL FREE: 877-434-7901  
FAX: 815-434-8980

**HONDA CB 1000 CUSTOM (1983)**  
**HONDA CB 900 CUSTOM (1982)**

INSTALLATION MANUAL  
US PATENT # 6,739,420

**WARRANTY WILL BE VOID IF INSTALLATION  
IS NOT DONE PROPERLY**

**READ THIS MANUAL FULLY BEFORE  
BEGINNING INSTALLATION OR DRIVING YOUR  
MOTORCYCLE WITH THE VOYAGER KIT ATTACHED**