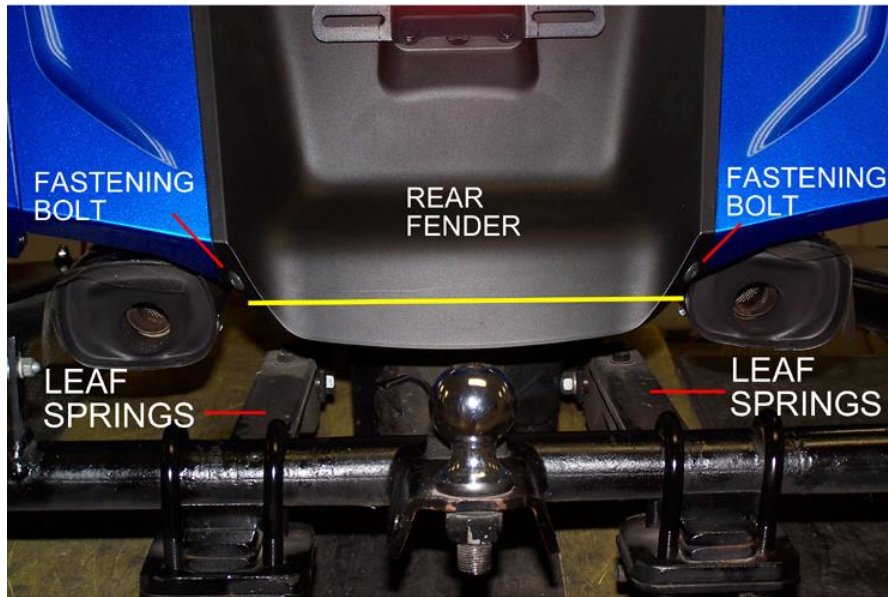


NOTE: FOR THE 2012 HONDA GL 1800

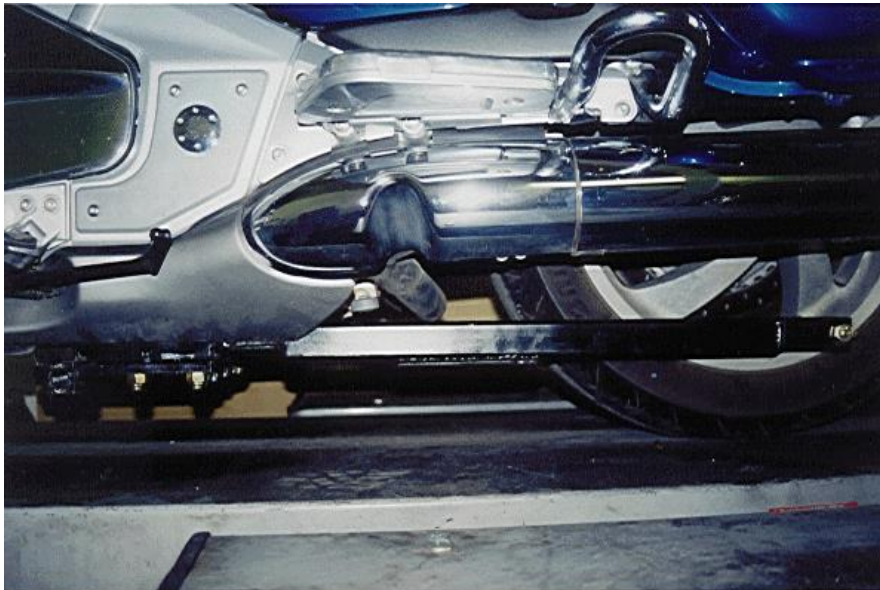


MAY NEED TO TRIM REAR FENDER
BELOW THE FASTENING BOLTS IF YOU
FEEL IT MIGHT HIT THE LEAF SPRINGS

HONDA GOLDWING 1800 REAR ARM ASSEMBLY INSTALLED

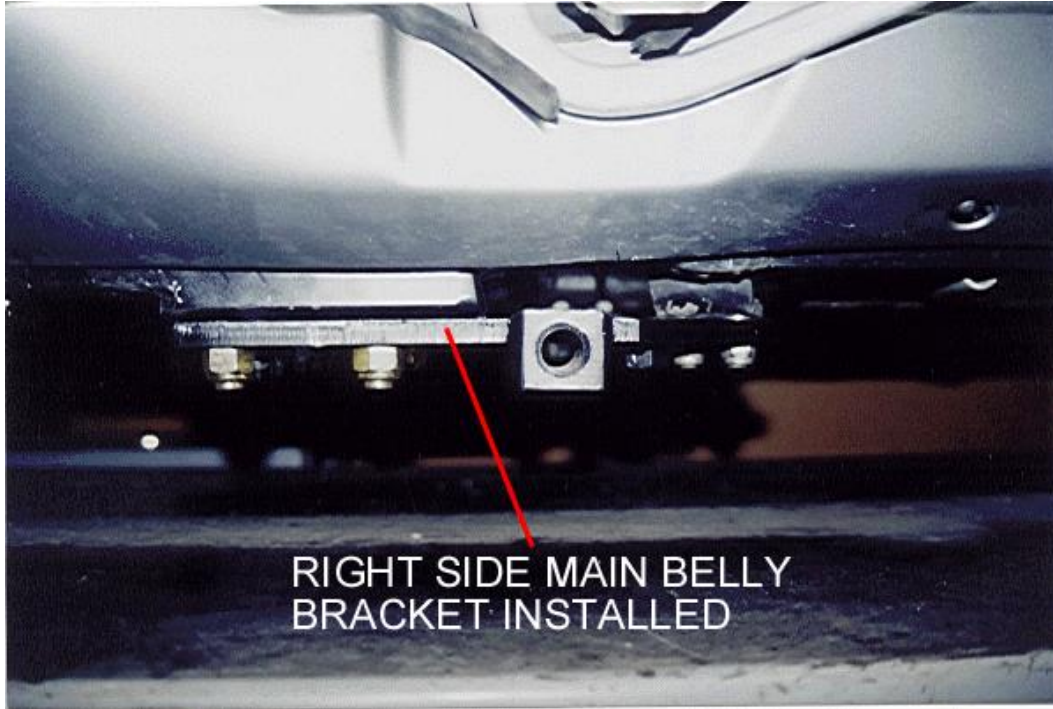


REAR ARM ASSEMBLY INSTALLED
RIGHT SIDE VIEW

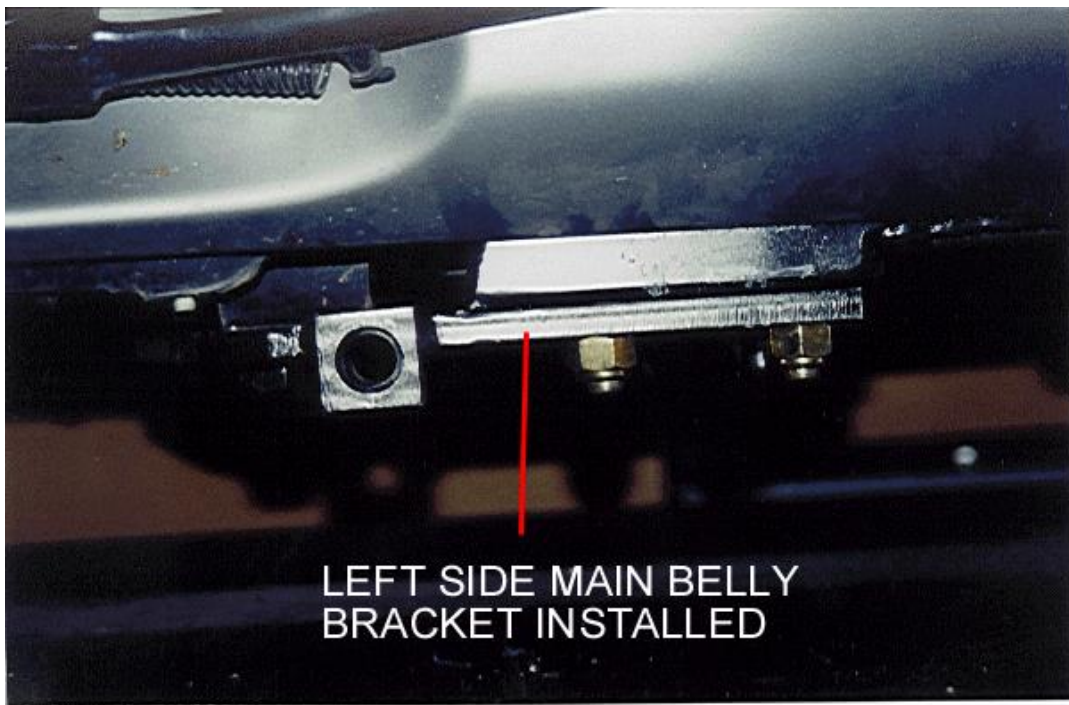


REAR ARM ASSEMBLY INSTALLED
LEFT SIDE VIEW

**HONDA GOLDWING 1800
MAIN BELLY BRACKET INSTALLED**

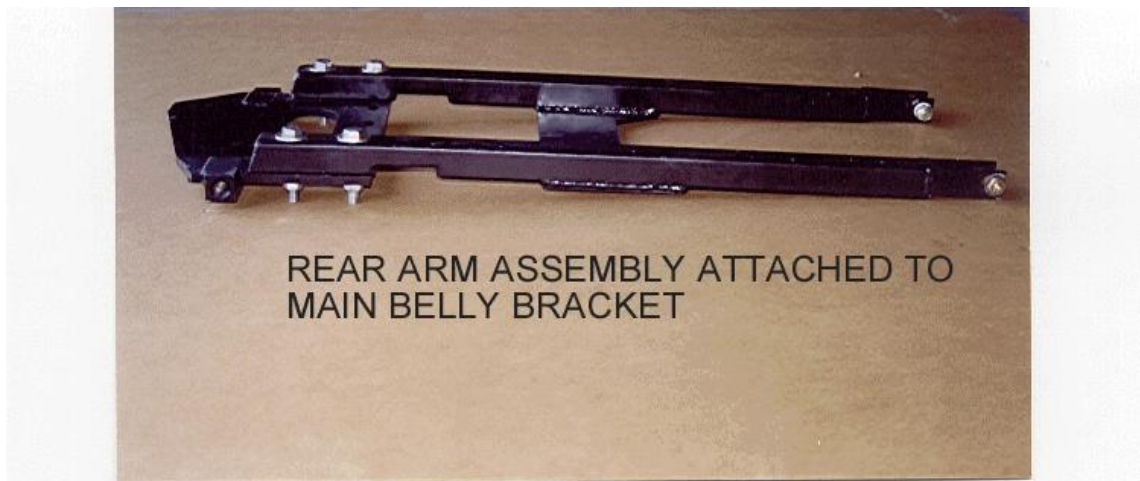
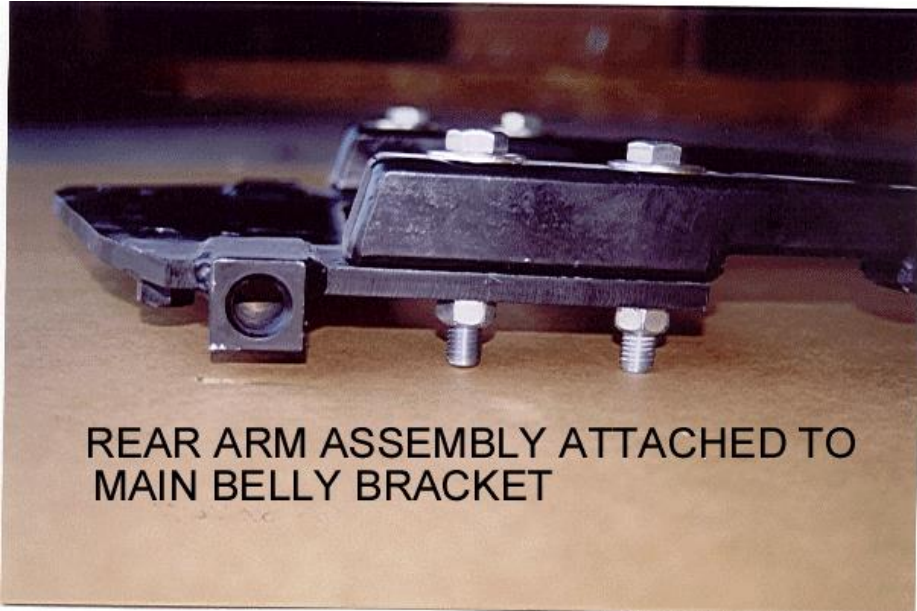


**RIGHT SIDE MAIN BELLY
BRACKET INSTALLED**

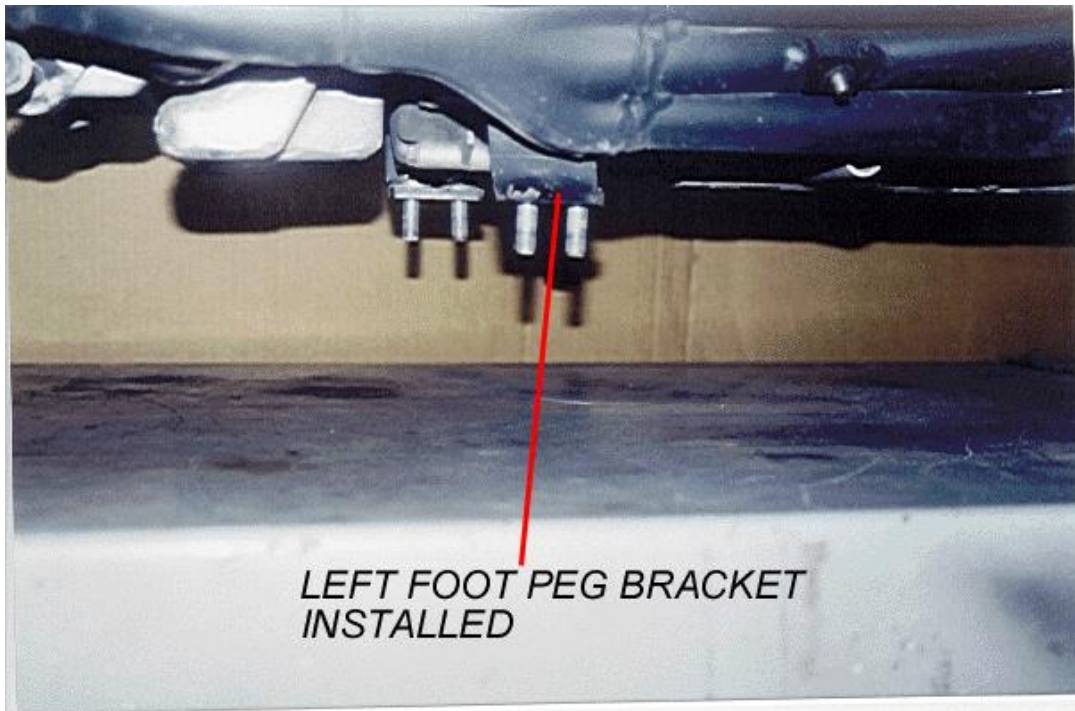
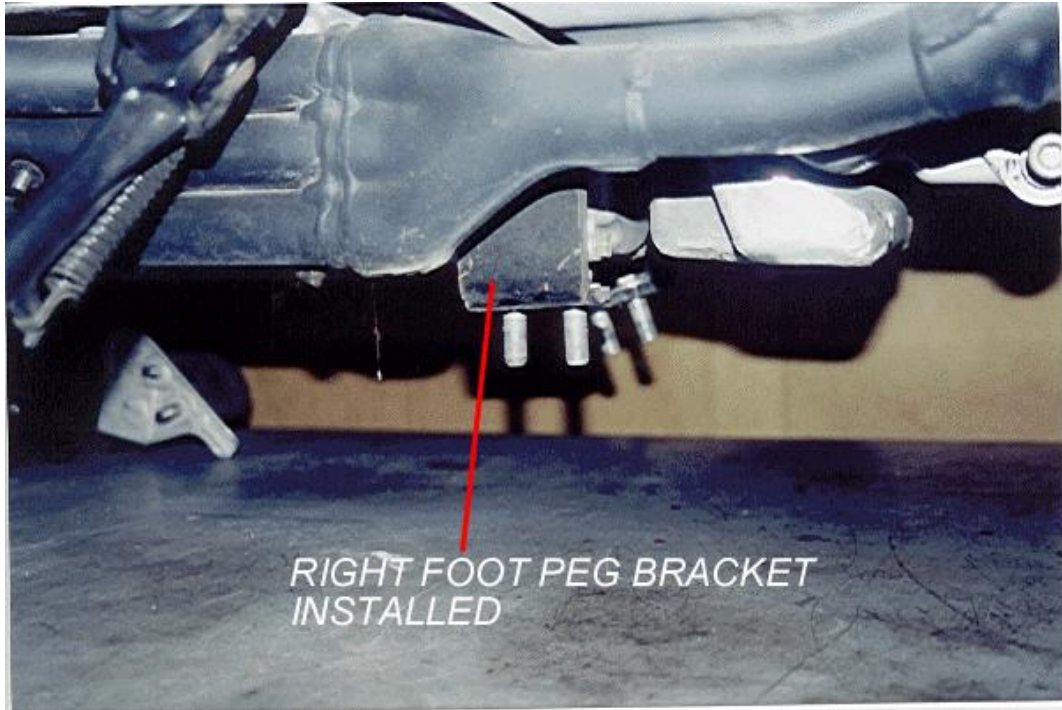


**LEFT SIDE MAIN BELLY
BRACKET INSTALLED**

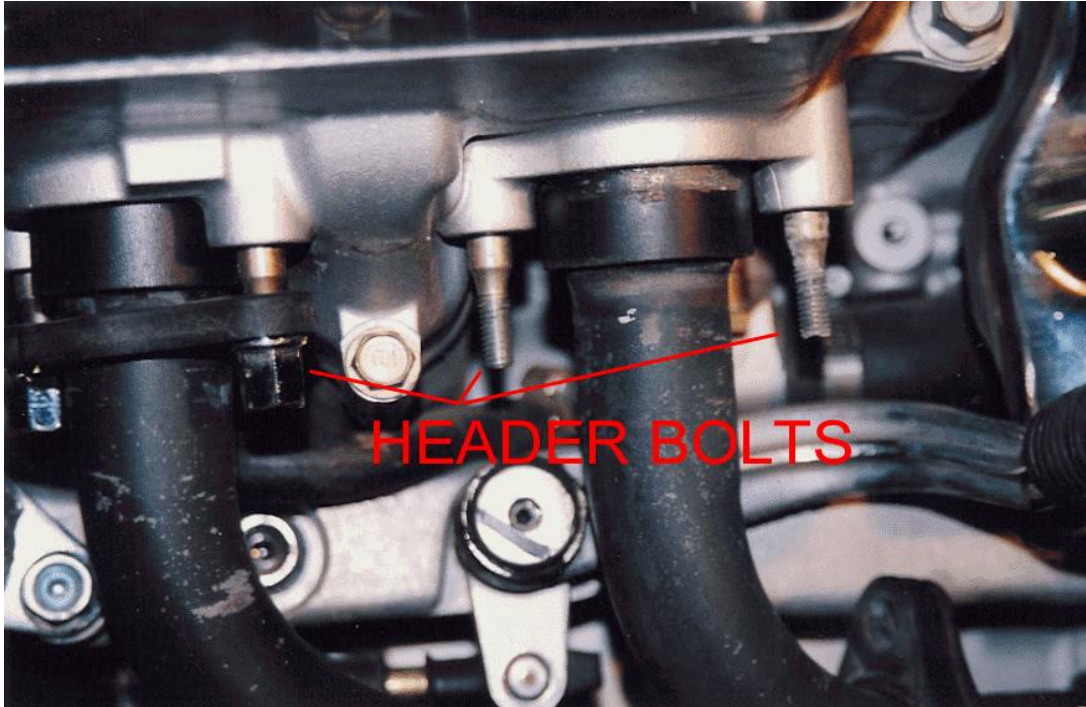
**HONDA GOLDWING 1800
REAR ARM ASSEMBLY ATTACHED
TO MAIN BELLY BRACKET**



HONDA GOLDWING 1800 FOOT PEG BRACKETS INSTALLED

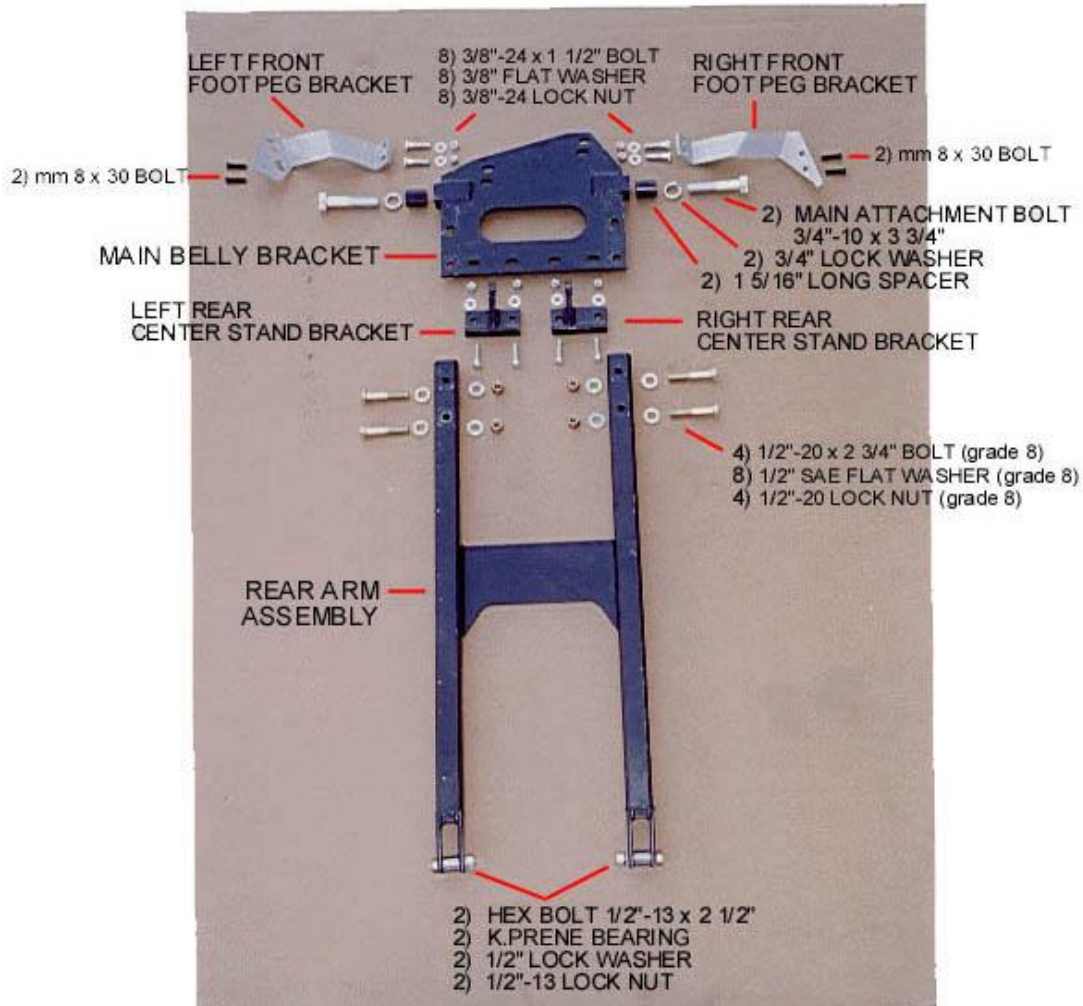


HONDA GL 1800 INSTALLING HEADER BOLTS



NOTE - USE EXTREME CAUTION INSTALLING HEADER BOLTS.
TO AVOID CROSS THREADING THE NUTS MAKE SURE
YOU CAN MAKE FOUR (4) FULL TURNS WITH FINGERS.

HONDA GOLDWING 1800 DESCRIPTION OF PARTS



Four 3/8" washers used as shims– not shown in picture above.
You may or may not have to use the shims. See note below.

After installing the mounting hardware and attaching the Voyager frame to the belly bracket you may need shims to make the motorcycle stand straight up and down. The shims may be used on either the left or the right side depending on which way the motorcycle is leaning. If the motorcycle is leaning to the left put the shims on the left side. If the motorcycle is leaning to the right put the shims on the right side.

**Place shims in-between
foot peg bracket & belly bracket;
rear center stand bracket
& belly bracket.**

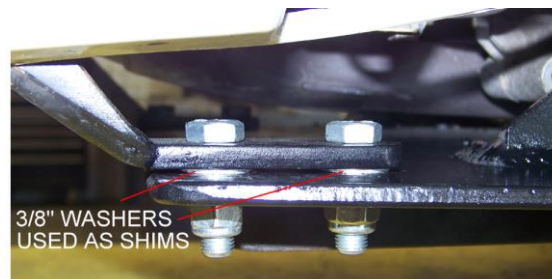


ILLUSTRATION OF SHIM PLACEMENT
BRACKET PICTURED MAY NOT MATCH YOUR BRACKET

SECTION 1

INSTALLATION OF HONDA GOLDWING 1800 MOUNTING HARDWARE

Place motorcycle on a clean flat surface. Be sure to tie down motorcycle so it does not tip over during installation of Voyager hardware. Installation is easier if motorcycle is in an upright position.

Disconnect negative cable from battery before beginning installation.

NOTE: The Voyager Convertible Kit was designed for a stock motorcycle from the manufacturer. Any after market products that are on a stock motorcycle may cause the installation process to not be done properly and may or may not need to be removed to be able to install the Voyager Convertible Kit completely. Be aware that your motorcycle and the same make & model as someone else's motorcycle may not have mufflers, body panels, frames, fenders and any other manufacturer parts that are attached to the motorcycle in the exact same place as yours. We at Motorcycle Tour Conversion, Inc. take that into consideration when we manufacture our parts to fit your motorcycle. Once in awhile you may need to modify your motorcycle slightly so that the Motorcycle Tour Conversion, Inc. hardware or suspension fits your motorcycle. Please call Motorcycle Tour Conversion, Inc. if you have any questions about installation with after market products or any modification of motorcycle and/or Motorcycle Tour Conversion, Inc. hardware.

NOTE: Before you start to install the mounting hardware make sure to raise the rear suspension of the motorcycle all the way up to maximum.

1. Remove front engine cover and then the left and right lower engine covers. This will expose the exhaust header bolts.
2. Remove center stand and save the bolts and bushing for later installation.
3. Remove the exhaust header bolts using a 10mm wrench. Then remove the muffler hanger bolts in the rear of the muffler and let the entire exhaust drop.
4. Remove left and right foot pegs. Find left and right foot peg brackets and install using the (4) mm 8 x 30 bolts.
5. Reinstall the exhaust and tighten header bolts to 9 ft-lbs., that is manufacturers specifications. (**Note - Use extreme caution installing header bolts. To avoid cross threading the nuts make sure you can make four (4) full turns with fingers.**) Put (4) 3/8"-24 x 1 1/2" bolts and washers in foot peg brackets, will tighten in Step 8.

SECTION 1

INSTALLATION OF

HONDA GOLDWING 1800

MOUNTING HARDWARE

6. Find the (2) center brackets - one marked (L) and one marked (R). Install left center stand bracket using bolt from center stand. Install right center stand bracket using bolt and bushing from center stand.

Note - Right side bolt is left handed threads.

7. Find the main belly bracket and rear arm assembly. Attach rear arm assembly on top of main belly bracket using (4) 1/2"-20 x 2 3/4" bolts (grade 8), (8) 1/2" SAE flat washers (grade 8), and (4) 1/2"-20 lock nuts (grade 8). The jack stand bolt holes on the Main Belly Bracket will be facing the ground. The plate on the rear assembly bracket needs to be toward the ground. The rear assembly bracket is bolted on top of the Main Belly Bracket. (See picture.) Snug at this time.
8. Take the main belly bracket and rear arm assembly all ready together and slide underneath motorcycle. Then attach to front foot peg brackets and rear center stand brackets using (8) 3/8"-24 x 1 1/2" bolts, 3/8" flat washers, and 3/8"-24 lock nuts.



MOTORCYCLE TOUR CONVERSION, INC.
1530 TITANIUM DRIVE
OTTAWA, IL 61350

TOLL FREE: 877-434-7901
FAX: 815-434-8980

HONDA GOLDWING 1800



INSTALLATION MANUAL
US PATENT # 6,739,420

**WARRANTY WILL BE VOID IF INSTALLATION
IS NOT DONE PROPERLY**

**READ THIS MANUAL FULLY BEFORE
BEGINNING INSTALLATION OR DRIVING YOUR
MOTORCYCLE WITH THE VOYAGER KIT ATTACHED**

