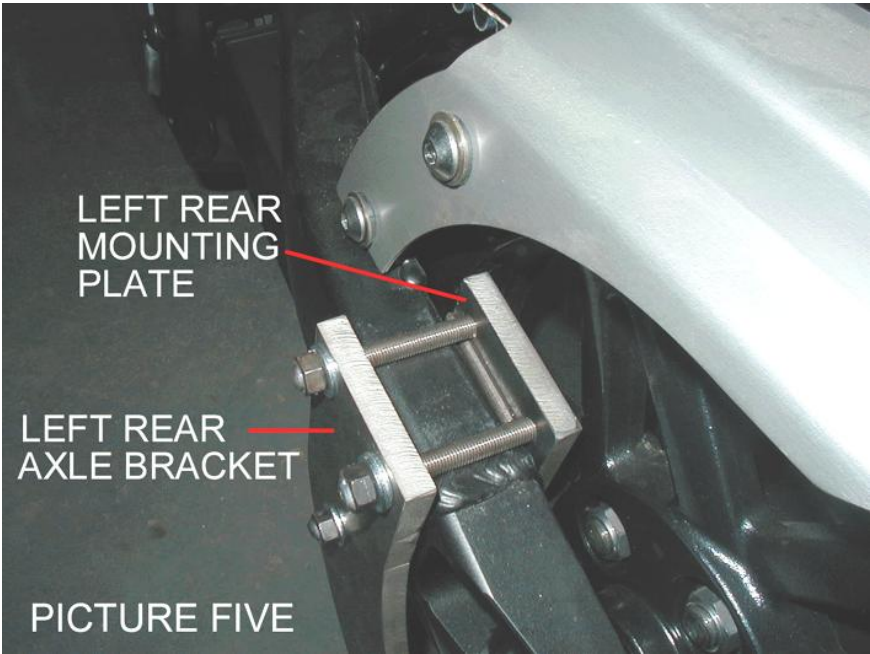
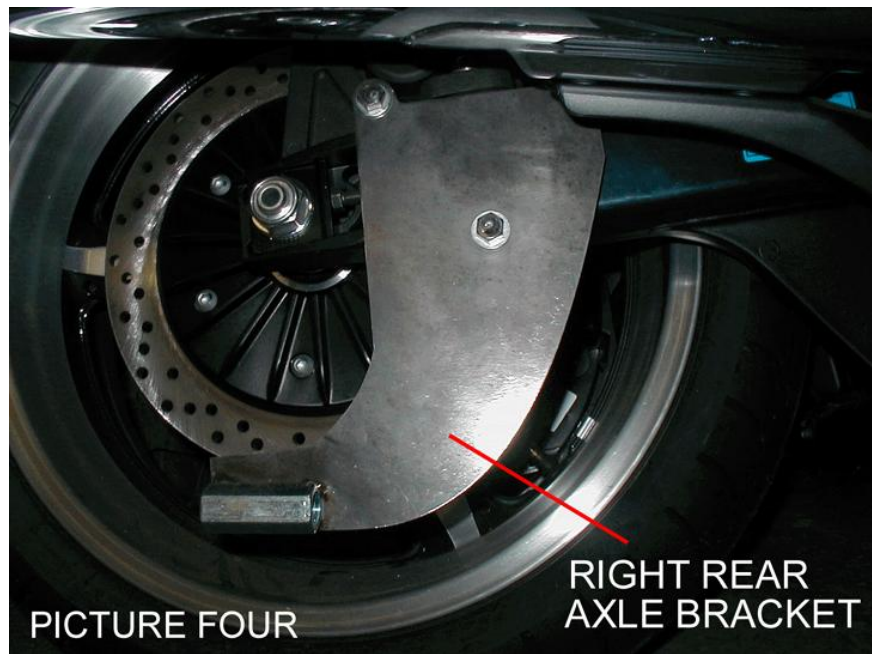
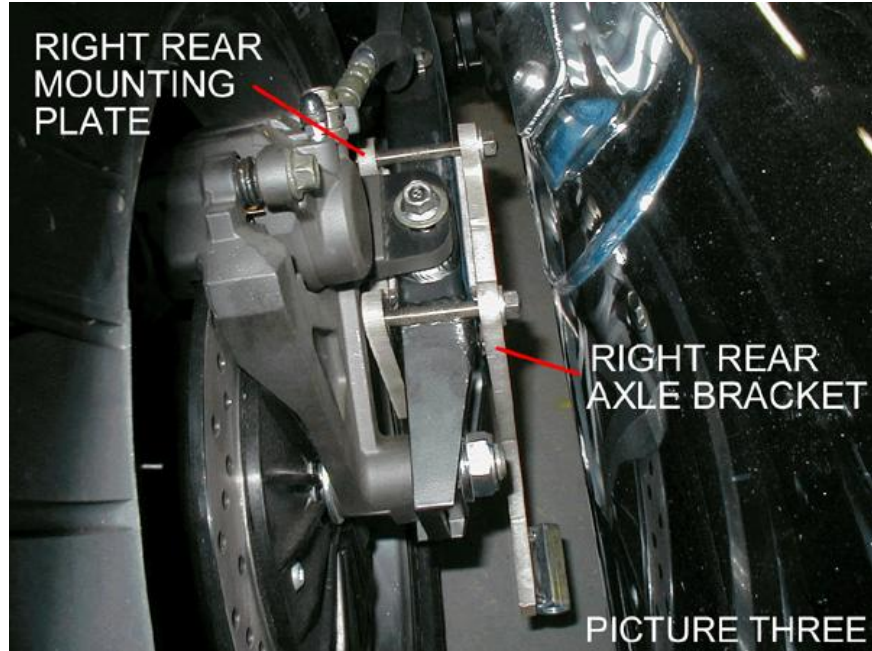


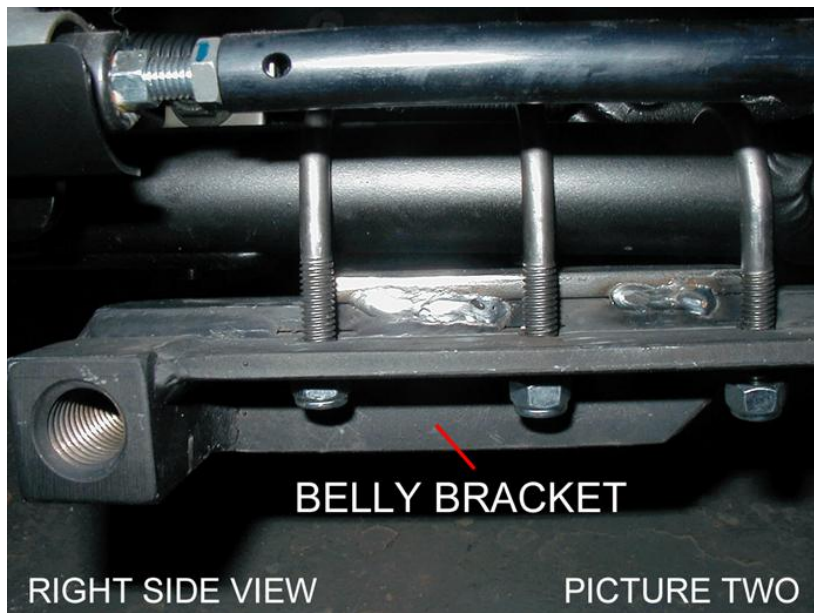
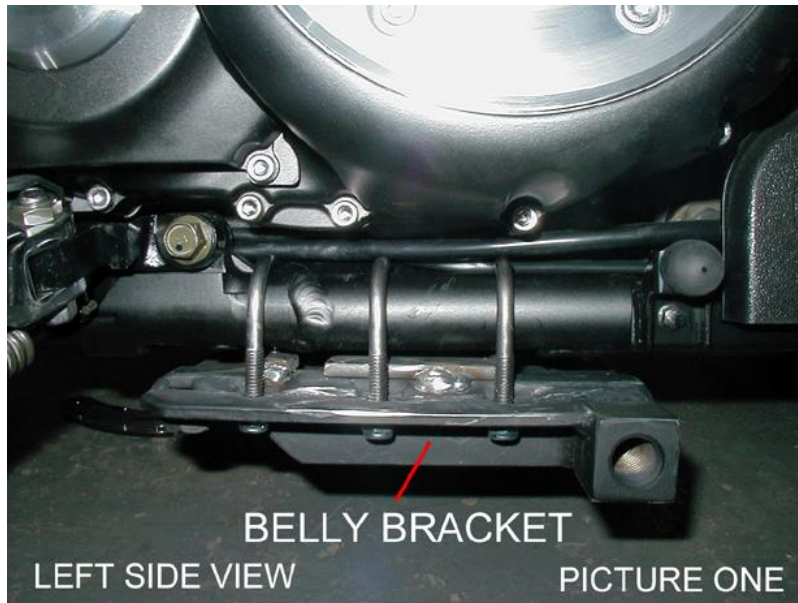
**YAMAHA ROAD STAR WARRIOR 1700  
LEFT REAR AXLE BRACKET INSTALLED (Pic 5 & 6)**



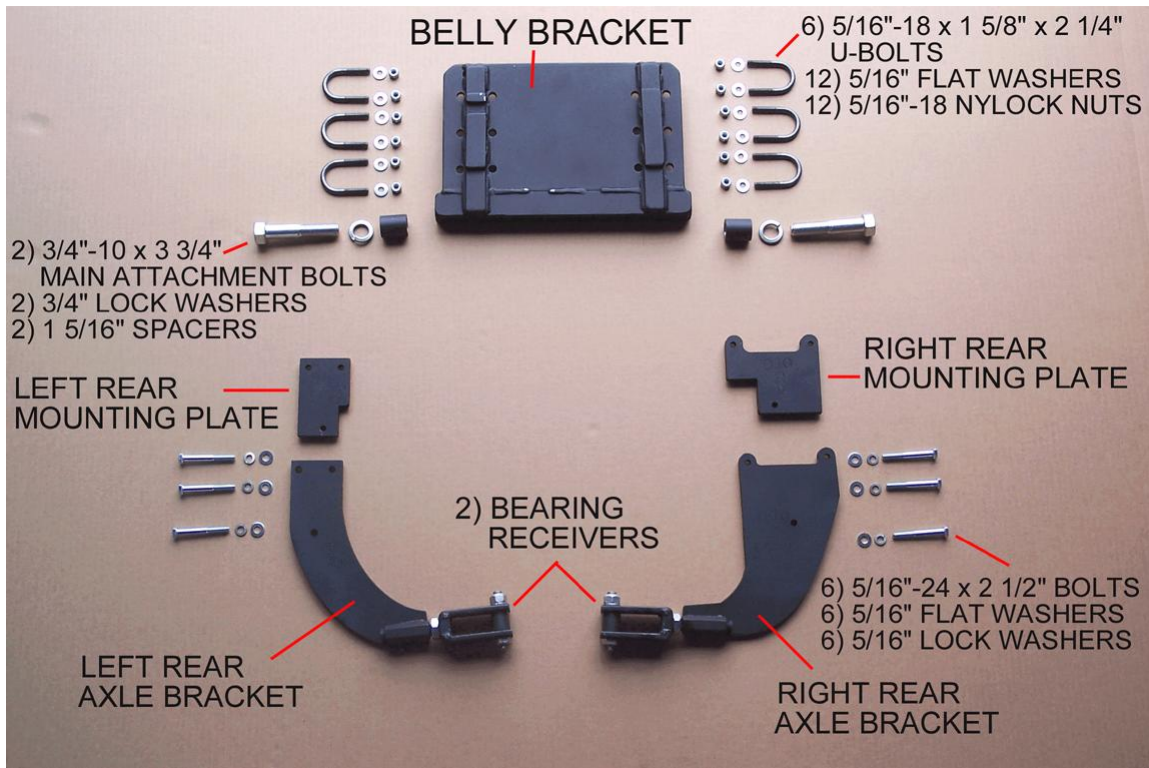
**YAMAHA ROAD STAR WARRIOR 1700  
RIGHT REAR AXLE BRACKET INSTALLED (Pic 3 & 4)**



# YAMAHA ROAD STAR WARRIOR 1700 BELLY BRACKET INSTALLED



# YAMAHA ROAD STAR WARRIOR 1700 DESCRIPTION OF PARTS

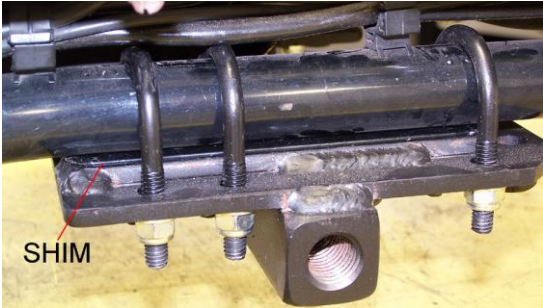


One 6" shim – not shown in picture above.  
You may or may not have to use the shim. See note below.

After installing the mounting hardware and attaching the Voyager frame to the belly bracket you may need a shim to make the motorcycle stand straight up and down.

The shim may be used on either the left or the right side depending on which way the motorcycle is leaning. If the motorcycle is leaning to the left put the shim on the left side. If the motorcycle is leaning to the right put the shim on the right side. The shim will go on one side of the belly bracket.

**Install the shim in-between belly bracket and motorcycle frame.**



**SHIM**

ILLUSTRATION OF SHIM PLACEMENT  
BRACKET PICTURED MAY NOT MATCH YOUR BRACKET

# SECTION 1

## INSTALLATION OF

### YAMAHA ROAD STAR WARRIOR 1700

### MOUNTING HARDWARE

Place motorcycle on clean flat surface. Make sure your motorcycle is tied down on both sides. This prevents bike from tipping over. Installation is easier if motorcycle is in an upright position.

**Disconnect negative cable from battery before beginning installation.**

**NOTE:** The Voyager Convertible Kit was designed for a stock motorcycle from the manufacturer. Any after market products that are on a stock motorcycle may cause the installation process to not be done properly and may or may not need to be removed to be able to install the Voyager Convertible Kit completely. Be aware that your motorcycle and the same make & model as someone else's motorcycle may not have mufflers, body panels, frames, fenders and any other manufacturer parts that are attached to the motorcycle in the exact same place as yours. We at Motorcycle Tour Conversion, Inc. take that into consideration when we manufacture our parts to fit your motorcycle. Once in awhile you may need to modify your motorcycle slightly so that the Motorcycle Tour Conversion, Inc. hardware or suspension fits your motorcycle. Please call Motorcycle Tour Conversion, Inc. if you have any questions about installation with after market products or any modification of motorcycle and/or Motorcycle Tour Conversion, Inc. hardware.

#### A) BELLY BRACKET

- 1) On left side of motorcycle frame install over frame of motorcycle (3) u-bolts 5/16"-18 x 1 5/8" x 2 1/4". The first u-bolt position will be just behind the motorcycle side stand mount. Position of (3) u-bolts can be seen in picture One.
- 2) On right side of motorcycle frame install over frame of motorcycle (3) u-bolts 5 1/6"-18 x 1 5/8" x 2 1/4". The first u-bolt position will be just behind the weld on motorcycle frame. Position of (3) u-bolts can be seen in picture Two.
- 3) Install belly bracket to the (6) u-bolts using 5/16" flat washers, and 5/16"-18 nylock nuts. **Do not tighten at this time.**

#### B) TWO (2) REAR AXLE BRACKETS

Note: Left and Rear Axle Brackets have mounting plates.  
Mounting plates are threaded for installation.

#### RIGHT REAR AXLE BRACKET

- 1) Find right rear axle bracket marked "R" and mounting plate marked "R". Both the rear axle bracket and the mounting plate have welded pads on them that fit against the swing arm.

# **SECTION 1**

## **INSTALLATION OF**

### **YAMAHA ROAD STAR WARRIOR 1700**

### **MOUNTING HARDWARE**

- 2) Install right rear mounting plate on inside of motorcycle swing arm on right side. Install right rear axle bracket on the outside of motorcycle swing arm attaching with (3) bolts 5/16"-24 x 2 1/2", 5/16" flat washers, and 5/16" lock washers.

Note: Position of rear axle bracket and mounting plate should be on each side of brake caliper as shown in picture Three.

#### **LEFT REAR AXLE BRACKET**

- 1) Find rear axle bracket marked "L" and mounting plate marked "L". Both rear axle bracket and mounting plate have welded pads on them that fit against the swing arm of the motorcycle.
- 2) Install the mounting plate on the inside of the motorcycle swing arm just behind the drive belt cover. Install the left rear axle bracket on the outside of the motorcycle swing arm. Attach both with (3) bolts 5/16"-24 x 2 1/2", 5/16" flat washers, and 5/16" lock washers.

Note: Position of left rear axle bracket and mounting plate can be seen in picture Four.

**NOTE:** Once the Voyager Unit is on the motorcycle, straighten the frame of the Voyager with the center of rear tire of the motorcycle. Once that is done, then tighten the six u-bolts on the belly bracket.



MOTORCYCLE TOUR CONVERSION, INC.  
1530 TITANIUM DR  
OTTAWA, IL. 61350

TOLL FREE: 877-434-7901  
FAX: 815-434-8980

## **YAMAHA ROAD STAR WARRIOR 1700**

INSTALLATION MANUAL  
US PATENT # 6,739,420

**WARRANTY WILL BE VOID IF INSTALLATION  
IS NOT DONE PROPERLY**

**READ THIS MANUAL FULLY BEFORE  
BEGINNING INSTALLATION OR DRIVING YOUR  
MOTORCYCLE WITH THE VOYAGER KIT ATTACHED**